



# LET'S BREAK UP WITH SINGLE-USE PLASTIC

---

## **A PRACTICAL HOW-TO GUIDE FOR FOOD VENDORS AND EXHIBITORS**

# MAKING THE SWAP

## OLD

## NEW

TRADITIONAL COFFEE CUPS THAT HAVE THIN PLASTIC LINING IN WALLS



SWAP FOR EITHER HOME OR COMMERCIAL COMPOSTABLE COFFEE CUPS WITH A SEPARATE RECYCLABLE LID (RATHER THAN BIODEGRADABLE).



PLASTIC BAGS OF ANY SIZE



SWAP FOR PAPER BAGS OR START A RETURN SYSTEM ON BAGS. DO NOT USE DEGRADABLE OR BIODEGRADABLE BAGS. COMPOSTABLE BAGS MAY BREAK IF USED AS CARRY BAG.



PLASTIC WATER BOTTLES AND BEVERAGE CONTAINERS



SWAP TO GLASS OR ALUMINIUM BEVERAGE CONTAINERS. YOU CAN BUY CANNED WATER. ALSO, GUIDE PATRONS TO WATER REFILL STATION AND BUBBLERS.



PLASTIC STRAWS



SWAP TO PAPER STRAWS. IF POSSIBLE, OFFER STRAWS ON-REQUEST ONLY.



PLASTIC CUTLERY



SWAP FOR WOODEN CUTLERY.



PLASTIC TAKEAWAY CONTAINERS AND STYROFOAM CONTAINERS



SWAP TO SUGARCANE PULP ALTERNATIVES THAT ARE HOME COMPOSTABLE.

SWAP TO CARDBOARD THAT IS RECYCLABLE.



SINGLE USE PLASTIC MERCHANDISE



SWITCH TO SOMETHING THAT CAN BE EITHER RECYCLED EASILY OR COMPOSTED, OR PROVIDE SOMETHING DESIGNED TO LAST.



INDIVIDUAL SAUCE, CONFECTIONERY OR CONDIMENT WRAPPERS



SWAP SAUCE PACKETS FOR BULK DISPENSERS. SWAP WRAPPED TREATS FOR HOME-MADE OR PAPER WRAPPED TREATS.

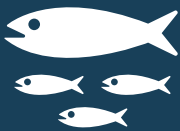


# THE PROBLEM

The impact of plastic pollution on the ocean is being recognised as one of the top environmental challenges of our time. Recent studies estimate that a business-as-usual scenario will lead to **more plastic in the ocean than fish, in weight, by 2050.**

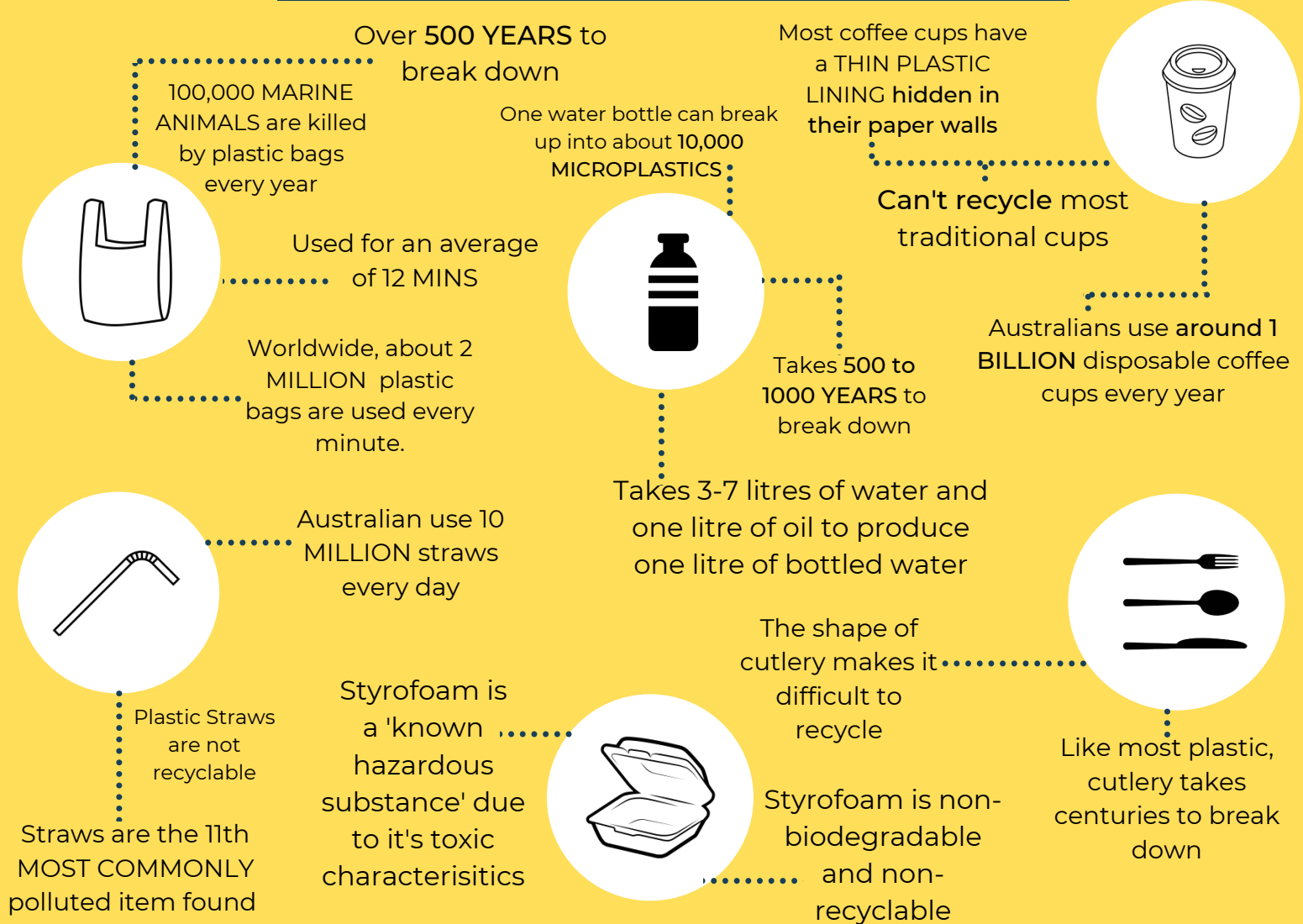
Plastics **do not biodegrade**, it breaks up into smaller and smaller particles (micro-plastics) that negatively impact the food chain by killing wildlife and marine life.

The **most common type** of marine debris is single use plastic that is used in **food and beverage** packaging.



## WHERE IS 'AWAY'?

THROWING IT AWAY IS NOT MAKING IT GO AWAY



# UNDERSTANDING PACKAGING LABELS

## MOST PREFERRED



**Highly recyclable materials (eg. glass and aluminium)**



**Home compostable & non-toxic**



**Commercially compostable**



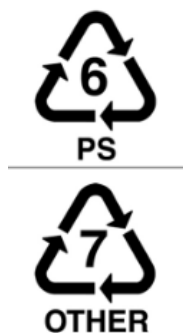
## LEAST PREFERRED



**Degradable or biodegradable plastics**



**Non-recyclable plastics**



**Recyclable plastics**



# TAKEAWAY ALTERNATIVES

## MOST PREFERRED

### HOME COMPOSTABLE PRODUCTS



FOR EXAMPLE

PAPER & CARDBOARD

SUGAR CANE PULP

WOOD



Home compostables are made from plant materials and can be composted at home or in the Eco Fiesta event organics bin.

## ACCEPTABLE

EXCEPT IT WILL STILL GO TO LANDFILL

### COMMERCIAL COMPOSTABLES



FOR EXAMPLE

DOUBLE COATED PAPER PRODUCTS (HEAT OR COLD PACKAGING)

PLANT STARCH



'Commercially compostable' means it has to go to a commercial facility to break down through a process. We do not currently have such a facility. Please dispose in the labelled bins provided at our events.

# OTHER OPTIONS TO REDUCE YOUR PLASTIC FOOTPRINT

## HOW TO: REDUCE

### AVOID WASTE IN THE FIRST PLACE

Example 1: Do they need a straw? If so, take an "on-request only approach" where you store products out of sight and only hand them out on-request.

Example 2: Do you need to give out individual sauce packets? What about having a central sauce dispenser.

## PREFERRED OPTION

For more inspiration visit:  
[TheLastStraw.com.au](http://TheLastStraw.com.au) or  
[PlasticFreeNoosa.org](http://PlasticFreeNoosa.org)

## HOW TO: REUSE

### AND CREATE CIRCULARITY

Example 1: Choose to provide or sell reusable options for your customers, or encourage your customers to bring their own reusables.

Example 2: Reward customers that bring their reusables (eg. with a discount)

## PREFERRED OPTION

For more inspiration visit:  
[ResponsibleCafes.org](http://ResponsibleCafes.org) or  
[GreenCafeen.com.au](http://GreenCafeen.com.au) or  
[BoomerangBags.org](http://BoomerangBags.org)

## HOW TO: RECYCLE

### IN A BENEFICIAL WAY

### HIGHLY RECYCLABLE PRODUCTS



DON'T FORGET TO DEPOSIT YOUR CONTAINERS AT A CONTAINERS FOR CHANGE REFUND POINT

[WWW.CONTAINERSFORCHANGE.COM.AU](http://WWW.CONTAINERSFORCHANGE.COM.AU)

## ACCEPTABLE OPTION

GLASS AND ALUMINIUM can be recycled an INFINITE number of times and never lose their quality. These beverage containers are welcome at Eco Fiesta. ✓

CARDBOARD can be recycled up to 10 times and has definitive end of life products. This is also welcome as a single use option and can be composted. ✓

MOST PLASTIC can only be recycled once or twice before it loses quality. It is the least preferred option. ✗

# LEAST PREFERRED

**AVOID THESE AT ALL COSTS**

---

Biodegradable and degradable plastic is similar to traditional plastic it will disintegrate into smaller and smaller pieces to become microplastic, having similar negative impacts on marine life.

---

## DEGRADABLE PLASTIC

**AVOID AT ALL COSTS**



**STANDARD  
PETROLEUM-  
BASED  
PLASTIC**



**CHEMICAL  
ADDITIVES USED  
IN THE PLASTIC  
TO SPEED UP  
BREAK DOWN**

**MICRO-  
PLASTICS**

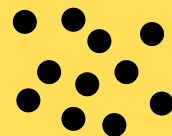
**TAKES CENTURIES TO DISAPPEAR**

---

## BIODEGRADABLE PLASTIC



**PLANT-  
BASED  
PLASTIC**



**CHEMICAL  
ADDITIVES USED  
IN THE PLASTIC  
TO SPEED UP  
BREAK DOWN**

**MICRO-  
PLASTICS**

**WILL BIODEGRADE, BUT GENERALLY NOT AS  
QUICKLY AS COMPOSTABLE PLASTIC.  
COULD TAKE DECADES TO DISAPPEAR**